



BALLANCE FARM ENVIRONMENT AWARDS

## ALUMNI NEWSLETTER

SOCIAL MEDIA



FOLLOW on TWITTER

### Alumni @ Mystery Creek Fielddays

MAY 11 UPDATE

Hi BFEA Alumni Members

Following on from success last year we have had a request to any Alumni Members who are attending the National Field Days at Mystery Creek (June 14 – 17).

Ballance Agri-Nutrients, principal sponsor of the Ballance Farm Environment Awards, will be using their tent at Field days as an opportunity to promote the Farm Environment Awards.

They have asked whether we have any volunteers that could spare some time to engage with visitors and the Ballance team. Feedback from last year was

- We took a handful of genuine leads for prospective entrants.
- Being on site was positive for building the relationship between the Ballance nutrient specialists and the BFEA team.
- Alumni presence enhanced the BFEA profile within the farming community.

If you think you may be able to spare an hour or two can you please let [James Ryan \(General Manager\)](#) know so they can pull together a roster. Any assistance would be greatly appreciated

---

## Alumni @ National Showcase

A huge thank you to all those who have assisted in setting up the Alumni Event being held in conjunction with National Showcase.

To those of you who have registered your attendance below is our programme. We look forward to seeing you all on 30 May.

### PROGRAMME

#### **30 May 2017**

##### ***Lunch - own arrangements***

1.00 to 1.15 Welcome, Introductions, Housekeeping, Icebreaker!

1.15 to 2.30 Session 1 - Social media & getting it to work for us!

##### ***2.30 to 3.00 Afternoon Tea***

3.00 to 4.00 Session 2 - Extra from experts, Southland panel on collaboration & working together for community good. Speakers include Zane Moss (Fish and Game), Anita Dawe (Environment Southland), Suzanne Hanning (Farmer)

4.00 to 5.00 Session 3 - A year in the life & a vision for the future - Richard and Dianne Kidd (Gordon Stephenson 2016)

##### ***5.30pm onwards Sponsor & 2017 winners cocktail party & Networking***

#### **31 May 2017**

##### ***Breakfast - more talking & networking***

8.30 to 9.30 Session 4 - Sexy new science for soil (Physiographics) what it means & how it can help us - Clint Rissmann (Land and Water Science Ltd)

9.30 to 10.15 Session 5 - The future looks bright - opportunities for the Alumni the Trust to work together (Alumni Meeting)

##### ***10.15 to 10.45 Morning Tea***

10.45 to 11.45 Session 6 - Regional development strategy (Southland style) Tom Campbell (Southland Regional Development)

##### ***15 minutes to travel***

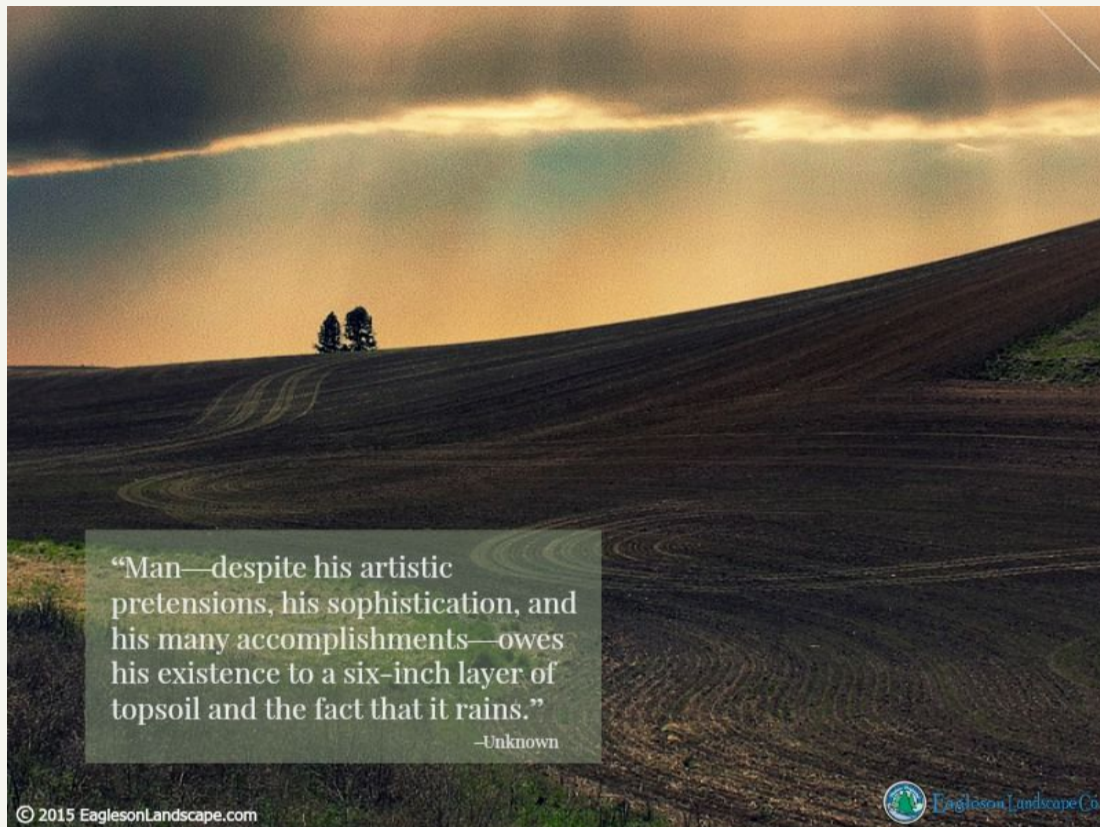
##### ***12noon to 1.30pm Long Lunch & Networking at Transport World***

1.30 to 2.30pm Session 7 - Insights on strategy, business & life from NZ's richest business

woman - Jocelyn O'Donnell (H W Richardson Group Ltd)

2.30 to 3.45pm Session 8 - Tour of Transport World (at own cost and pace)

***4.00pm Return at the latest to hotel in time to get ready for Showcase 2017***



Happy Farming  
**BFEA Alumni Committee**



*Copyright © 2017 BFEA Alumni, All rights reserved.*

Want to change how you receive these emails?  
You can [update your preferences](#) or [unsubscribe from this list](#)

MailChimp